



★
ELITE
★
WIZARD JEANS
& FASHION
by Sally Allen★



Sally's Wizard IDEA gets better

- 2 A Wizard Idea
- 4 Chanel Style Jackets
- 6 Ruffle Shirts
- 8 Ruffle Polo Neck Sweaters
- 10 Jackets & Gilets
- 12 Elite Wizard Party Jeans
- 24 Elite Wizard Bridal Jeans
- 28 Elite Wizard Skinny Jeans
- 44 Elite Wizard Straight Cut Jeans
- 50 Elite Wizard Boot Cut & Flare Jeans
- 54 Accessories, Shoes & Boots
- 56 The Elite Wizard Men's Room
- 60 Men's Shirts
- 64 The Shape of Jeans
- 66 How to Measure Yourself
- 68 Your Guide to Wizard Jeans Sizing
- 70 How to Order & Delivery Charges

Welcome to our latest magazine-style catalogue. We have lots of exciting news for you and, in

particular, how YOU are going to benefit directly from our latest business decisions.

Since we launched in 2009 we have developed the business on-line, through direct mail and through the trade via distributors and agents worldwide. That is all about to change!!

We have taken back direct control of our brands and now you will only be able to buy our Elite Wizard Jeans Collections through our new website or via mail order.

The benefit to our customers is enormous as it means that there will be

no more 'middle men' or retailers taking a large percentage of the cost of our Wizard Jeans®. This means that we can now pass on much lower prices to YOU across all our styles rather than paying it in sales and distribution. During the initial transition period there might be a few old styles available via Amazon or through some of our distributors overseas but in the future our brand will no longer be available to them.

So take a close look at all our new prices and you will see that our most expensive individually hand-finished party jeans range, which were £175 a pair, are now available to you at £135...a saving of £40 just on one pair...phenomenal value. Our entry level jeans now start at £75 and our mid-range are down from £125 to £99.

There are now over 50 styles of Elite Wizard Jeans and 2 very special new editions. For ladies, GIGI, a white, skinny cut jean in two leg lengths, individually hand-finished with a sprinkling of diamante stones which are perfect for Spring, Summer evenings or parties or even that romantic beach wedding. For men we have the addition of HARRY, a very stylish straight cut white jean. Both styles benefit from our unique Wizard® body shaping technology so they ensure a svelte look.

Meanwhile, our highly successful and best-selling Sally Allen London, Chanel-style jackets continue to be much admired and

desired and are now available in 4 colours and 4 sizes. In addition, our Ruffle Polo neck very fine

knit sweaters are also a wardrobe 'must have' and now available in 12 colours and two sizes.

We still adhere to the Coco Chanel philosophy that **"a girl should be two things classy and fabulous"** but I would like to add men to the quote because personally I do think that all men can also look fantastic in a pair of well-cut jeans and a stylish shirt and jacket – not matter what age.

Talking of age, highlights another Chanel quote **"you can be gorgeous at thirty, charming at forty and irresistible for the rest of your life"** and again I think that this should be applied to the men too. With a little thought and being honest about our shape and how we can show off our best points – and yes – we do all have

★ ELITE
WIZARD JEANS
by Sally Allen★

**DIRECT TO YOU
ENJOY THE SAVINGS**

some! - we can all create a timeless chic look of our own. Fashion should be our slave not us a slave to fashion, which is why it is best to be discerning about the pieces we choose and when trying on try to look at your image in a mirror from all angles – particularly the rear if possible! A view overlooked at your peril.

I firmly believe that you can wear anything you like at any age, it is just important to get the right shape to flatter your body and to drape the bits that you would rather keep your personal secret. I rely on Chanel again to sum-up **“fashion fades, only style remains the same.”**

I hope that you enjoy our new catalogue and make a few selections either for yourself or as gifts for others. Either way 'Happy Shopping'.

Best wishes,

Sally

“I firmly believe that you can wear anything you like at any age.”

Double Award Winning business woman, Sally Allen-Gerard's resume' ticks all the boxes. From starting and running a boating and leisure business in Barbados to setting up and running a marketing, sponsorship and publicity agency – her life has been full of entrepreneurial adventures.



4 *Classy & Fabulous* Jackets

4 Chic Options - 4 Sizes

Amelie Red jacket £59

Knitted red jacket with black edging and black jet stone embellishment.

The jackets are 45% cotton and 55% Acrylic and come in 4 sizes – Small (UK 8/UK 10), Medium (UK 12 /UK 14), Large (UK 16 /UK 18) and XL (UK 20 - 46").

Annie Black jacket £59

Knitted black jacket with white edging and pearl and diamante stone embellishment.

The jackets are 45% cotton and 55% Acrylic and come in 4 sizes – Small (UK 8/UK 10), Medium (UK 12 /UK 14), Large (UK 16 /UK 18) and XL (UK 20 - 46").



Our *famous* Chanel inspired Jackets

Angie Royal Blue jacket £59

Knitted royal blue jacket with white edging and pearl embellishment.

The jackets are 45% cotton and 55% Acrylic and come in 4 sizes – Small (UK 8/UK 10), Medium (UK 12 /UK 14), Large (UK 16 /UK 18) and XL (UK 20 - 46").

Angie White jacket £59

Knitted white jacket with black edging and pearl embellishment.

The jackets are 45% cotton and 55% Acrylic and come in 4 sizes – Small (UK 8/UK 10), Medium (UK 12 /UK 14), Large (UK 16 /UK 18) and XL (UK 20 - 46").

To order visit **wizardjeans.com** or call **07768 816420**

5



Ruffle Shirts

Romantic Ruffle Shirts £95

In 3 options *Classic* White,
Dramatic Black or *Chic* Blue & White Stripe

Fabulous flattering and chic ruffle neck shirt with matching 2-button ruffle cuffs. Perfect for day or evening.

Available in UK Sizes: 8 to 18.

Florence £125

This sensational shirt is made in cotton elastane jersey with 100% cotton sateen trim and 100% organdie collar.

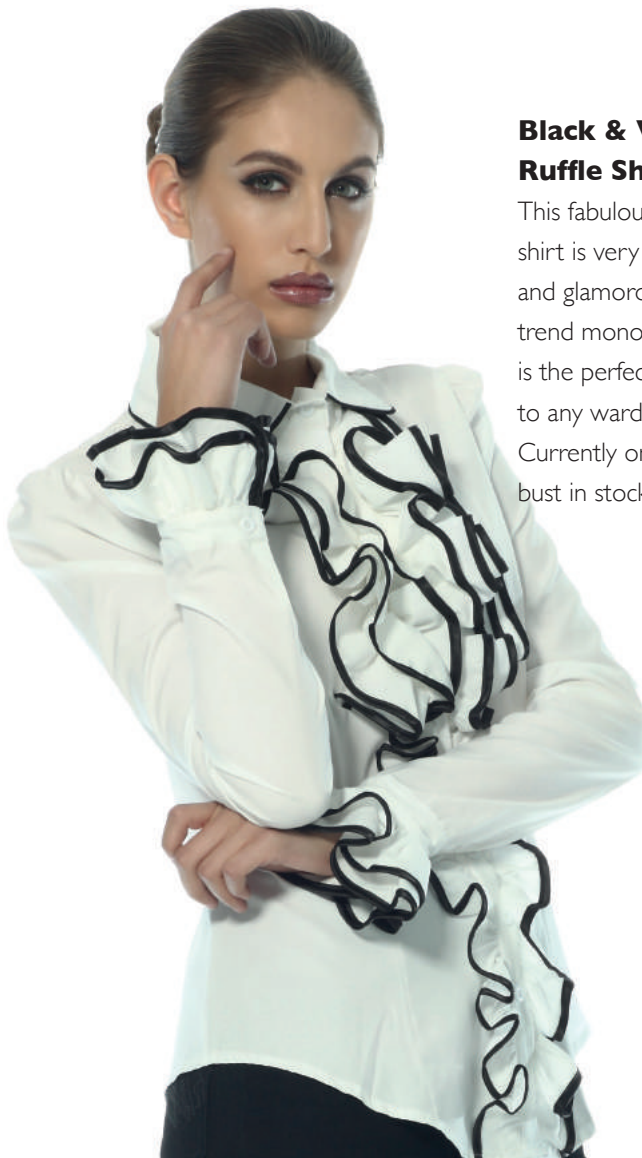
Limited stock

Available in UK Sizes
12 to 18



Black & White Ruffle Shirt £45

This fabulous ruffle shirt is very feminine and glamorous. In on trend monochrome it is the perfect addition to any wardrobe. Currently only size 36" bust in stock



Florette £125

This gorgeous shirt is made in cotton elastane jersey with 100% cotton sateen trim and 100% organdie collars and cuffs. Elegant, chic and beautiful. Available in UK Sizes 8 to 18



Tina £125

Super chic white shirt with stylish pleated colour. The shirt is made in high quality cotton/elastane poplin which washes and irons well. Available in UK Sizes 8 to 18.



To order visit wizardjeans.com or call **07768 816420**

Our Best Selling Ruffle Polo

A wardrobe 'must have' addition. Perfect for layering or on their own. Create your individual smart or casual look.

Ruffle Polo Fine Knit Sweaters £35

12 Colours and 2 Sizes

Best-selling fine knit ruffle polo in 95% viscose and 5% spandex.

Now in two sizes S/M and M/L.





To order visit wizardjeans.com or call **07768 816420**



Mongolian Lamb Gilet £395

Fabulous, high fashion Mongolian lamb gilet - available in White, Peach and Black.
One size.



Glamorous yet casual



Sheepskin Flying Jacket £495 (right)

This is the ultimate flying jacket. Made in the UK from 100% sheepskin. It is incredibly soft, fully lined with the shorter wool and gives a very flattering fit. The sheepskin wool shows on the collar and the edging along the bottom and the turn-back cuffs. The jacket has two side pockets and a vertical one with a 5" zip on the left chest and an angled 5" zip on the right-hand side. There is a small buckle across the neckline. Ideal for country or city life and for all seasons.

Length approx 23" from back of neck

Sleeves approx 19" from under arm

Available in Chocolate Brown and in 3 sizes – Small (UK8/UK10); Medium (UK12/UK14) and Large (UK 16/UK18)

*Chic
and Snug*



To order visit wizardjeans.com or call **07768 816420**

11



Individually
hand finished

Party Jeans

**1 Gina Jet Black Diamante
Elite Wizard Jeans £175 - £135**

Individually hand-finished, regular rise, skinny cut with unique Wizard© body shaping technology and sprinkled with diamante stones.

Leg length 32" and UK sizes 6 to 18.

Styled with Chanel inspired

Angie White jacket £59

Knitted white jacket with black edging and and pearl embellishment.

The jackets are 45% cotton and 55% Acrylic and come in 4 sizes – Small (UK 8/UK 10), Medium (UK 12 /UK 14), Large (UK 16 /UK 18) and XL (UK 20 - 46")

2 Gigi Elite Wizard Jeans £175 - £135

Individually hand-finished regular rise, skinny cut with unique Wizard© body shaping technology and sprinkled with diamante stones.

This style comes in two leg lengths 27" and 32" and UK sizes 6 to 18.

*Styled with our famous
Chanel inspired*

Annie Black jacket £59

Knitted black jacket with white edging and diamante and pearl embellishment.

The jackets are 45% cotton and 55% Acrylic and come in 4 sizes – Small (UK 8/UK 10), Medium (UK 12 /UK 14), Large (UK 16 /UK 18) and XL (UK 20 - 46").

ELITE | DIRECT TO YOU
WIZARD JEANS | ENJOY THE SAVINGS
*by Sally Allen**

the *perfect* Party Jeans

Gina Jet Black Diamante
Elite Wizard Jeans £175 - £135

Individually hand-finished, regular rise, skinny cut with unique Wizard© body shaping technology and sprinkled with diamante stones.

Leg length 32" and UK sizes 6 to 18.



To order visit **wizardjeans.com** or call **07768 816420**

15

Perfect for a
special night out
or a romantic
beach wedding...



Gigi Elite Wizard Jeans £175 - £135

Individually hand-finished, regular rise, skinny cut with unique Wizard® body shaping technology and sprinkled with diamante stones.

This style comes in two leg lengths 27" and 32" and UK sizes 6 to 18.

Styled with

Florette ruffle shirt £125

This gorgeous shirt is made in cotton elastane jersey with 100% cotton sateen trim and 100% organdie collars and cuffs.



★**ELITE**
WIZARD JEANS
by Sally Allen★

DIRECT TO YOU
ENJOY THE SAVINGS



**Marilyn Super Chic Elite Wizard
Jeans £175 - £135**

Individually hand-finished, regular rise, skinny cut with studs down the outside seams creating a slim-line look.

Styled with our best selling

**Ruffle Polo fine knit sweater in
black £35**

In 95% viscose and 5% spandex in two sizes S/M and M/L.

And our latest Chanel inspired

Amelie jacket £59

Knitted red jacket with black edging and jet stone embellishment.

The jackets are 45% cotton and 55% Acrylic and come in 4 sizes – Small (UK 8/UK 10), Medium (UK 12 /UK 14), Large (UK 16 /UK 18) and XL (UK 20 - 46").

To order visit **wizardjeans.com** or call **07768 816420**

17



Black Domino Elite Wizard Jeans £175 - £135

Individually hand-finished, regular rise, skinny cut with a polka dot effect and sprinkled with jet stones. Mega chic and stylish.

This style has a 32" inside leg and comes in UK sizes 6 to 18.

Styled with ours

Ruffle Polo neck fine knit sweater in black £35

In 95% viscose and 5% spandex and two sizes S/M and M/L.

Jet Stone detail





Sienna Midnight Elite

Wizard Jeans £175 - £135

Individually hand-finished, full rise, straight cut with unique Wizard® body shaping technology and Austrian Crystal detail.

Styled with

Mongolian Lamb Gilet -

Black £395

and

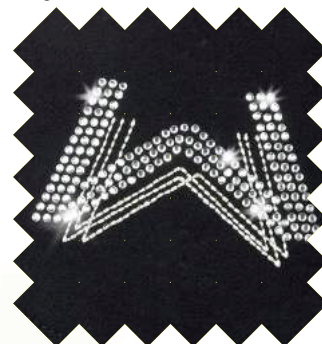
Monroe Ankle suede boots

£145.

Beautiful and elegant black kid suede ankle boot with shearling inside and bit of sparkle to make these boots very elegant and the perfect addition to an evening look.

Party
Jeans

Crystal detail



To order visit wizardjeans.com or call **07768 816420**

19

★
ELITE
WIZARD JEANS
by Sally Allen★

DIRECT TO YOU
ENJOY THE SAVINGS

Limited stock available

Sienna Midnight Sparkle

Elite Wizard Jeans £145 - £120

Full rise, straight cut with unique Wizard© body shaping technology and sprinkled with diamante stones. 32" inside leg - available in UK sizes 8, 14, 16 and 18 at time of going to print.

Styled with

Romantic Ruffle Shirt £95

The shirt is 97% Cotton and 3% Elastane and available in UK sizes 8, 10, 12, 14, 18 and 20.



Luxurious Velvet

Maxine Elite Wizard Jeans in luxurious Black Velvet

£175 - £135

These gorgeous evening jeans in black velvet are beautifully chic and elegant. They have a regular rise and slim line straight cut and with a pair of killer heels - perfect for any occasion. 32" inside leg and UK sizes 6 to 18.

Styled with

Black and White Ruffle shirt £45

This fabulous ruffle shirt is very feminine and glamorous. In on trend monochrome it is the perfect addition to any wardrobe.

Only size small/medium, bust (approx 36") in stock

To order visit wizardjeans.com or call **07768 816420**

21

Soft to the touch...

Kate Elite Wizard Jeans in
luxurious Pink Velvet £175 - **£135**

These fabulous pink velvet jeans are
just gorgeous - soft to the touch and a
beautiful shade of pink.

They have a regular rise and slim line
straight cut and are perfect for any
occasion.

32" inside leg and available in UK sizes
6 to 18.

Styled with our best selling

Ruffle Polo fine knit sweater

in pink **£35**

In 95% viscose and 5% spandex
in two sizes S/M and M/L





★**ELITE**
WIZARD JEANS
by Sally Allen★

DIRECT TO YOU
ENJOY THE SAVINGS

To order visit **wizardjeans.com** or call **07768 816420**

23

Limited Edition

Bridal Jeans

Designed & Made in the UK
Individually hand finished

The perfect Party Jeans

Individually hand finished

1 Gina Jet Black Diamante Elite Wizard Jeans £175 - £135

Regular rise, skinny cut with unique Wizard© body shaping technology and sprinkled with diamante stones. Leg length 32" and UK sizes 6 to 18.

*Styled with our famous
Chanel inspired*

Annie jacket £59

Knitted black jacket with white edging and diamante and pearl embellishment.

The jackets are 45% cotton and 55% Acrylic and come in 4 sizes – Small (UK 8/UK 10), Medium (UK 12 /UK 14), Large (UK 16 /UK 18) and XL (UK 20 - 46").

Our latest Elite Wizard Jeans for men

2 Harry £125 - £110

Very stylish well cut jeans in white with body shaping technology to show you off at your best. Fantastic paired with a T Shirt or shirt and jacket.

We have styled it with our

Padstow shirt £58

In always on-trend, white 100% very high quality cotton – a winner for any occasion.

Available in UK Sizes S, M, L, XL and XXL

Elegant, chic and stylish for a romantic beach wedding or a special night out

Individually hand-finished

3 Gigi Elite Wizard Jeans £175 - £135

Regular rise, skinny cut with unique Wizard© body shaping technology and sprinkled with diamante stones. This style comes in two leg lengths 27" and 32" and UK sizes 6 to 18.

Styled with

Florette ruffle shirt £125

This gorgeous shirt is made in cotton elastane jersey with 100% cotton sateen trim and 100% organdie collars and cuffs. Available in UK Sizes 8 to 18.

1

2

3

ELITE
WIZARD JEANS
*by Sally Allen**

DIRECT TO YOU
ENJOY THE SAVINGS

To order visit wizardjeans.com or call **07768 816420**

25



Elegant, chic and
stylish for a romantic
beach wedding or a
special night out

Individually hand-finished

Gigi Elite Wizard Jeans

£175 - £135

Regular rise, skinny cut with unique Wizard© body shaping technology and sprinkled with diamante stones. This style comes in two leg lengths 27" and 32" and UK sizes 6 to 18.

Styled with

Florette ruffle shirt £125

This gorgeous shirt is made in cotton elastane jersey with 100% cotton sateen trim and 100% organdie collars and cuffs. Available in UK Sizes 8 to 18.



★ ELITE
WIZARD JEANS
by Sally Allen

DIRECT TO YOU
ENJOY THE SAVINGS

Bridal Jeans

Our latest Elite Wizard Jeans for men

Harry £125 - £110

Very stylish well cut jeans in white with Wizard© body shaping technology to show you off at your best.

Fantastic paired with a T Shirt or shirt and jacket. This style comes in 34" leg length and UK sizes 32" - 44".

We have styled it with our

Padstow shirt £58

In always on-trend, white 100% very high quality cotton – a winner for any occasion. Available in UK Sizes S, M, L, XL and XXL

To order visit **wizardjeans.com** or call **07768 816420**

27

★**ELITE**
WIZARD JEANS
by Sally Allen★

DIRECT TO YOU
ENJOY THE SAVINGS

Gina Indigo £125 - £99

The Gina Indigo jean has Wizard© body shaping technology to create a flattering silhouette with a 32" inside leg, a regular rise and is available in UK Sizes 6 to 18.

Gina Indigo also comes in a 34" inside leg option in UK Sizes 6 to 18.

Styled here with our best-selling

Ruffle Polo fine knit sweater

in pearl white **£35**

95% viscose and 5% spandex in two sizes
S/M and M/L.

Ladies
Skinny
Jeans



Gina Midnight Blue £95 - £75

This Gina skinny in Midnight Blue, is a fantastic colour for day or night - and this fabulous denim fabric is a lightweight 10 oz. This also means that you will probably be able to get into a size smaller as there is more give in the lighter denim. This style benefits for Wizard© body shaping technology and has a 32" inside leg, a regular rise and comes in UK Sizes 6 to 16.

Styled with

Mongolian Lamb Gilet in White £395

An extremely chic and snuggly combo.



The image shows two models from the waist down, wearing jeans and high heels. The model on the left is wearing solid blue jeans with a small, sparkling logo on the back pocket. The model on the right is wearing blue and white striped jeans. Both models are wearing high-heeled shoes. The background is a plain, light color.

Eden Roc £125 - £99

Eden Roc is the ultimate elegant casual jean in the always on trend bleached stonewash blue with a special small WJ logo on the top of the right-hand back pocket in diamante – chic casual glamour to perfection. They have a regular rise, which means they come to the navel, with a skinny cut and 32" inside leg and benefits from our famous 'pocket control'. Available in UK Sizes 6 to 18.

You would never be out of place in these in St Barts or the South of France!

Lyndy Stripe

£145 - £120

These blue and white striped jeans are spot on trend with their iconic St Tropez look. Lyndy Stripe have a regular rise, with a skinny cut and 32" inside leg and benefit from our famous 'pocket control'. The fabric is high quality Tencel which gives a fabulous fit and is perfect for stopping the traffic – and the yachts – in the summer!

Available in UK Sizes 6 to 18.

Ladies *Skinny* Jeans



Lyndy Crop £135 - £110

These blue and white striped jeans are spot on trend with their iconic St Tropez look. Lyndy Crop have a regular rise, which means they come to the navel, with a skinny cut and 25" inside leg which makes them the perfect crop for summer. This style also benefits from our famous 'pocket control'. The fabric is high quality Tencel which gives a fabulous fit.

Available in UK Sizes 8 to 16

Styled with ours

White Wizard Jeans Classic T Shirt £18

In Tencel fabric with a scoop neck and flattering short (but not too short) sleeves. There is a small WJ signature in the middle of the bottom of the right sleeve.

Available in UK Sizes: Small, Medium and Large.

To add a touch of extra glamour the model is also wearing one of our fabulous

Mongolian Lamb Gilet in Peach.

Available in one size **£395**

Malibu £125 - £99

Malibu is a fabulous elegant casual jean in the always on-trend white with a special small WJ logo on the top of the right-hand back pocket in diamante – chic casual glamour to perfection. They have a regular rise, with a skinny cut and 32" inside leg and 'pocket control'. Perfect to dress up or down – so sensational for any occasion.

32" inside leg and available in UK Sizes 6 to 18.

Size Tip – as this denim has a slightly looser weave you will probably be able to get into a smaller size than normal.

Styled with our famous Chanel inspired

Angie Royal Blue jacket £59

Knitted royal blue jacket with white edging and pearl embellishment.

The jackets are 45% cotton and 55% Acrylic and come in 4 sizes – Small (UK 8/UK 10),

Medium (UK 12 /UK 14),

Large (UK 16 /UK 18) and

XL (UK 20 - 46").



Ladies *Skinny* Jeans

Gina Jet Black £125 - £99

Always in fashion these jet black skinny jeans have Wizard© body shaping technology, which lifts the bottom and holds in the stomach to give a flattering contour.

They have a 32" inside leg to the ankle, a regular rise and come in UK Sizes 6 to 18

Styled with

Amelie jacket £59

Knitted red jacket with black edging and jet stone embellishment.

The jackets are 45% cotton and 55% Acrylic and come in 4 sizes – Small (UK 8/UK 10), Medium (UK 12 /UK 14), Large (UK 16 /UK 18) and XL (UK 20 - 46").



To order visit wizardjeans.com or call **07768 816420**

33

Glastonbury £110 - **£85** (below)

Our Famous Glastonbury Jean - Perfect for Glamping at Glastonbury Festival. Regular Rise, Skinny cut in Stonewash Blue with an Individual Acid Wash so no 2 pairs are the same. Available in 2 lengths 27" inside leg for petites and 32".

Wear them with killer heels or the Glastonbury Festival way - tucked into boots.

Styled here with ours

Classic Romantic Ruffle Shirt

in White **£95**

With very flattering ruffle neck and cuffs. Very chic and very classy.

The shirt is 97% Cotton and 3% Elastane

Available in UK Sizes: 8, 10, 12, 14 and 18.



Gina Stonewash Blue £125 - £99

With regular rise and skinny cut, these jeans benefit from very high quality 'pocket control' to ensure a svelte look and feature gold stitching. Should you need to shorten these jeans they are cut and styled in a way so that you won't lose any of their fashionable shape. The denim is 2% elastane and 98% cotton.

Available in UK Sizes: 6 to 18 with 32" inside leg.

Styled with our best-selling

Ruffle Polo fine knit sweater in Black £35

In 95% viscose and 5% spandex in two sizes S/M and M/L.

Ladies Skinny Jeans



To order visit **wizardjeans.com** or call **07768 816420**

35



Ladies *Skinny* Jeans

★ **ELITE** | DIRECT TO YOU
WIZARD JEANS | ENJOY THE SAVINGS
by Sally Allen★

Marilyn Bombshell £165 - £125 (left)

These spot on trend jeans will unleash your inner 'rock chick'! They have a faux leather panel in the front and stonewash blue denim at the back with silver studs down both outside seams.

Marilyn Baby Blue £165 - £125 (right)

They have a faux leather panel in the front and bleached stonewash blue denim at the back with silver studs down both outside seams.

Both styles have a regular rise, skinny cut and false pockets at the front to ensure a sleek silhouette and a small WJ logo on the right hand back pocket.

They come in two lengths 27" and 32".

Just fabulous, fashionable and flattering!

Available in UK Sizes 6 to 16

Marilyn Baby Blue is *Styled with our best-selling*
Ruffle Polo fine knit sweater in Red £35

in 95% viscose and 5% spandex in two sizes S/M and M/L.



To order visit wizardjeans.com or call **07768 816420**

37

Bombay Blue Wizard Jeans £125 - £99

Available in UK Sizes 10 to 18.

Pink Champagne Wizard Jeans £125 - £99 (centre)

Available in UK Sizes 10 to 18.

Lemon Fizz Wizard Jeans £125 - £99 (far right)

Available in UK Sizes 8 to 18.

Fabulous elegant casual jeans in the always on-trend turquoise, lemon and pink with a special small WJ logo on the top of the right-hand back pocket in diamante – chic casual glamour to perfection. They have a regular rise, which means they come to the navel and sit on top of the hips, with a skinny cut and 32" inside leg and benefits from our famous 'pocket control'. Perfect to dress up or down – so sensational for any occasion.

Styled with our fabulous

Birkin suede coats

in Fuchsia and Turquoise **£495**

The shape of this coat is phenomenal – it is so flattering! Made in the UK, the cut of the back panels make this unlined suede coat a bit of a miracle worker on the body.

The sleeves are very long - 65 cm from the shoulder seam – which you can cut to your personal ideal length.

However we recommend not cutting any shorter than 'knuckle' length. There are no fastenings and the coat has an undulating hem.

Overall length is 110 cm.

Available in Fuchsia, Turquoise as well as Black & Tan

Small (UK 8/10)

Medium (UK 12/14)

and Large (UK 16/18).

DUE TO THE DELICACY OF THIS GARMENT THERE ARE NO EXCHANGES OR RETURNS

White Wizard Jeans Classic T Shirt £18

In Tencel fabric with a scoop neck and flattering short (but not too short) sleeves. There is a small WJ signature in the middle of the bottom of the right sleeve.

Available in UK Sizes: Small, Medium and Large.

ELITE | DIRECT TO YOU
WIZARD JEANS | ENJOY THE SAVINGS
*by Sally Allen**

Mongolian Lamb Gilet in White.

Available in one size, **£395**.



Ladies *Skinny* Jeans

To order visit wizardjeans.com or call **07768 816420**

39

Ladies *Skinny* Jeans

Lauren £155 - £110

This style is one of the latest additions to our range of skinny jeans. It has the spot on trend patches and distressed look which is currently taking the fashion world by storm.

It comes with a regular rise in stonewash blue with patchwork detail and an element of sandblasting to make each pair unique.

This style has a skinny cut and an ankle skimming 31.5 inch inside leg and comes in UK sizes 6 to 18.

You will lead the fashion pack in these iconic Wizard Jeans.

Styled with our best-selling

Ruffle Polo fine knit sweater in Red **£35**

In 95% viscose and 5% spandex in two sizes S/M and M/L.





To order visit wizardjeans.com or call **07768 816420**

41

Gina Peachy £155 - £110 (left)

This style has a 27" inside leg and comes in UK sizes 8 to 18.

Gina Dolce Vita £155 - £110 (centre)

In 'Hermes' tan, they come in two leg lengths 27" and 32" The 32" inside leg version and is available in UK sizes 8 to 20 and the 27" leg in UK Sizes 8 to 18.

Gina Chocolate £155 - £110 (far right)

Who doesn't love chocolate? This style has a 32" inside leg and comes in UK sizes 8 to 20

All styles have a regular rise, skinny cut and faux leather piping down the outside of each leg to maximise it's elegant and flattering look. and benefit from our special 'pocket control' and have a very discreet tonal W on the right-hand back pocket.

★ ELITE | DIRECT TO YOU
WIZARD JEANS | ENJOY THE SAVINGS
by Sally Allen★

Ladies *Skinny* Jeans

Gina Peachy

Styled with our best-selling

Ruffle Polo fine knit sweater in
Animal Print **£35**

In 95% viscose and 5% spandex in two
sizes S/M and M/L.



Gina Dolce Vita *Styled with ours*

White Wizard Jeans Classic T Shirt £18

See page 38.

Cashmere Pashmina with Suede Tassels £145

A pashmina with a twist - beautiful as a scarf or wrap, with wonderfully long suede tassels.

Available in Chocolate Brown; Donkey Brown & Black.



Gina Chocolate *Styled with ours*

White Wizard Jeans Classic T Shirt £18

To add a touch of extra glamour the model is also wearing one of our fabulous

Mongolian Lamb Gilets in Peach.

Available in one size **£395**

To order visit **wizardjeans.com** or call **07768 816420**

43

Straight Cut jeans

Garbo £120 - £95 (left)

Leading the fashion trend again – these ultra elegant indigo blue pinstripe denim jeans will not only take you from 9 to 5 but also through cocktail hours too. Named after one of the most iconic stars of Hollywood, these GARBO jeans will make you stand out from the crowd and give you the 'WOW' factor. They have a full rise, straight cut and benefit from the unique Wizard© bonding technology.

They come in 3 leg lengths 30", 32" and for those with fabulous long legs 34".

Available in 30" leg in UK Sizes 6 to 18; 32" leg in UK Sizes 8, 10, 12, 14 and 18 and 34" leg in UK Sizes 6 to 18.

Please NOTE: You will need to go up a size in this style as the pinstripe process made them a size smaller than our normal fit.

Styled with our best-selling

Ruffle Polo fine knit sweater in Black £35

In 95% viscose and 5% spandex in two sizes S/M and M/L.

Alexis White £145 - £125 (centre)

These white jeans have the special Wizard© bonding technology throughout the jean. This is a 'first' and means that you will have the ultimate control and the cleanest line ever in a pair of jeans - very Hollywood in fact! The added bonus is that it means no more VPL (panty line). This style has a full rise and straight cut with an elegant double 'W' logo embroidered in tonal thread on both back pockets. The ultimate classy fashion jean.

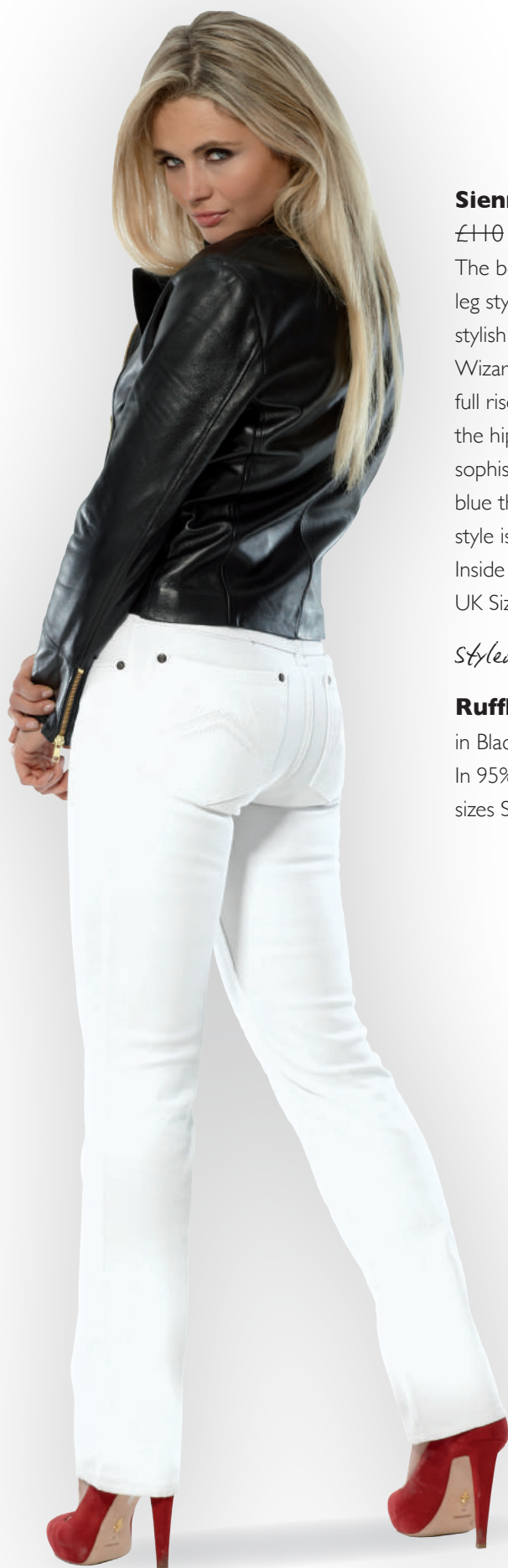
Inside leg is 32 inches.

Limited stock - available in UK Sizes 6, 8, 16, 18 and 20

Styled with our high fashion

Carrie Biker Jacket £425

Made in the UK from the finest and softest black leather. This extremely classy and stylish jacket is fully lined with a 5 inch zip at each cuff and two side pockets with zips. The length of the jacket from the base of the collar is 21 inches and the collar depth 1.5 inches. Only available in Small (UK8/UK10)



Sienna Dark Blue

£110 - **£85** (right)

The best-selling Sienna full rise, straight leg style in fabulous Midnight Blue. This stylish shade, along with the unique Wizard© bonding technology and the full rise, create a flattering contour to the hips. The back pockets feature a sophisticated, small double 'W' on tonal blue thread. Great for day or night, this style is a wardrobe essential.

Inside leg is 32 inches and available in UK Sizes 6 to 20

Styled with our best-selling

Ruffle Polo fine knit sweater

in Black **£35**

In 95% viscose and 5% spandex in two sizes S/M and M/L.



Jude Platinum Grey £125 - £99 (right)

In chic Platinum Grey with a straight cut, full rise and high quality 'pocket control' to ensure a svelte look. This style features a tonal double 'W' embroidered on both back pockets and the Wizard star on the ticket pocket. A truly classy and elegant jean.

Inside leg 32".

Limited stock – available in UK Sizes 6, 8 and 18

Jude Purple Haze £125 - £99 (centre)

Fabulous Purple Haze have a straight cut, full rise and high quality 'pocket control' to ensure a svelte look. This style features a silver grey double 'W' embroidered on both back pockets and the Wizard star on the ticket pocket. A truly classy and elegant jean.

Inside leg 32 inches.

Limited stock – available in UK Sizes 6, 8, 16, 18 and 20

Sienna Classic Indigo £120 - £95 (far right)

The Sienna Classic has a full rise and straight cut in flattering indigo blue with traditional yellow ochre stitching. The back right hand pocket features a discreet WJ in the top right hand corner in gold stitching. This style features our very latest Wizard© body shaping technology – so you should look your best yet in this very elegant style!

Inside leg 32" and available in UK Sizes 8 to 20

Styled with our

Romantic Ruffle Shirt in Blue and White Stripe £95

With very flattering ruffle neck and cuffs. Very chic and very classy. Available in UK Sizes 8 to 18.



★**ELITE**
WIZARD JEANS
by Sally Allen★

DIRECT TO YOU
ENJOY THE SAVINGS



Straight
Cut jeans

To order visit wizardjeans.com or call **07768 816420**

47

Straight

Cut jeans



Sienna Jet Black

★**ELITE**
WIZARD JEANS
by Sally Allen★

DIRECT TO YOU
ENJOY THE SAVINGS

Sienna Jet Black £110 - £85 (left)

These Jet Black jeans have the special Wizard© technology bonded into the denim fabric which goes from the waist down to, and including, the upper thigh - which lifts the bottom, lifts and holds in the stomach and gives a very flattering contour to the hips - and what's more they are incredible comfortable!

This style is one of our best selling shapes - full rise with classic straight cut.

The elegant double 'W' logo is embroidered in silver lurex thread on both back pockets so you can dress these jeans up for evening with a special top for a glamorous look. Perfect for a night out!

The denim is 2% elastane and 98% cotton.

Inside leg 32" and available in UK Sizes 8 to 20

Styled with ours

Tina Shirt £120

Super chic white shirt with stylish pleated colour. The shirt is made in high quality cotton/elastane poplin which washes and irons well. Available in UK Sizes 8 to 18.

Jude Stonewash Blue £110 - £85 (right)

Classic & Classy Stonewash Blue jeans with a straight cut and full rise. These Wizard Jeans are one of the 'signature' range - and benefit from very high quality 'pocket control' to ensure a svelte look.

Inside leg is 31 inches.

Available in UK Sizes 6 to 20.

Styled with ours

White Wizard Jeans Classic T Shirt £18

See page 38.





Boot Cut & Flare jeans

Bardot Flare £75 - £135

The Bardot Flare style is the latest addition to our individually hand-finished range and has the spot on trend flare which is currently taking the fashion world by storm.

This is an extremely flattering style as the flare balances the hips to perfection. It comes with a full rise in stonewash blue with an element of sandblasting to make each pair unique.

This style has a flare boot cut and a 33" inside leg and is available in UK sizes 6 to 20.

You will lead the fashion pack in these iconic Wizard Jeans.

Styled with our best-selling

Ruffle Polo fine knit sweater in Animal Print **£35**

In 95% viscose and 5% spandex

in two sizes S/M and M/L.



Zara Indigo £95 - £75

These jeans have the special Wizard© technology bonded into the denim fabric which goes from the waist down to, and including, the upper thigh - which lifts the bottom, lifts and holds in the stomach and gives a very flattering contour to the hips - and what's more they are incredible comfortable!

The jeans carry the distinctive yet discreet 'W' in a tonal colour on both back pockets and the denim is 98% cotton and 2% Elastane.

All these jeans come in their own matching denim drawstring tote bag with its own special branded pocket - making them easy to take anywhere offering comfortable, sophisticated fashion in a flash. Inside Leg: 33".

Limited **stock** – available in UK Sizes 6, 8, 10 and 12

To order visit **wizardjeans.com** or call **07768 816420**

51

Boot Cut & Flare jeans

Zara Jet Black £95 - £75

These Jet Black jeans have the special Wizard© technology bonded into the denim fabric which goes from the waist down to, and including, the upper thigh - which lifts the bottom, lifts and holds in the stomach and gives a very flattering contour to the hips - and what's more they are incredible comfortable! This style is full rise and has a flattering boot cut. The elegant double 'W' logo is embroidered in tonal thread on both back pockets. The ultimate in understated elegance. Inside leg is 32 inches.

Limited stock – in UK Sizes 6, 8, 10, 12, 16, 18 and 20

Styled with this fabulous, very feminine and glamorous

Black & White Ruffle Shirt £45

In on trend monochrome it is the perfect addition to any wardrobe.

Currently only available in size 36".



Zara Midnight Blue £110 - £85

This deep Midnight Blue colour is a classic favourite. This denim fabric is a lightweight 10oz - so perfect for the Spring and Summer and it also means that you can probably get into a size smaller. Benefitting from a full rise, these figure-flattering jeans have the unique Wizard© body shaping technology ensuring the bottom is lifted and the stomach is held in. This style is incredibly popular and the colour update gives it a stylish edge. The back pockets feature a sophisticated, small double 'W' in tonal blue thread. Inside leg is 33 inches.

Limited stock – in UK sizes 8, 10, 12 & 16

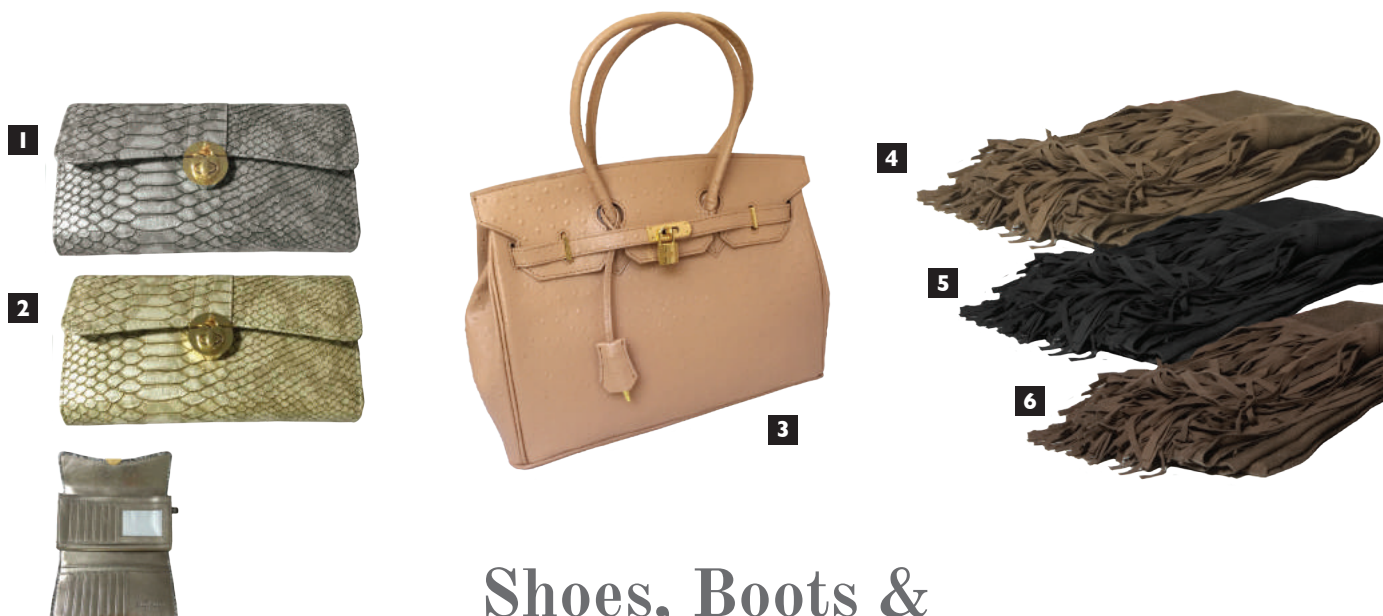
Styled with our best-selling

Ruffle Polo fine knit sweater in Black £35

In 95% viscose and 5% spandex in two sizes S/M and M/L.



To order visit **wizardjeans.com** or call **07768 816420**



Shoes, Boots & Accessories

Snake Print Wallet/Purse £35

- 1 Grey
- 2 Creamy Gold

Birkin style leather handbag Ostrich-Style Real Leather Handbag.

Was £195 - Now £95

- 3 Only available in Light Tan

Cashmere Pashmina with Suede Tassels

A pashmina with a twist - beautiful as a scarf or wrap, with wonderfully long suede tassels £145

- 4 Donkey Brown
- 5 Black
- 6 Chocolate

7 Sparkly Silver Strappy Sandals

Fabulous sling-back evening sandals with 4" high heel £34



Julian Hakes' exceptional Mojito shoes £165

- 8 Yellow Leopard
- 9 Grey Python
- 10 Snow Leopard
- 11 Hot Pink

Emily Pixie Boots Extremely snug fur-lined suede wedge boots – super comfortable £75

- 12 Blue
- 13 Tan
- 14 Grey
- 15 Cranberry

Tammy Boots

Spot on trend - Super snug lace up boots with lovely furry insides £70

- 16 Brown
- 17 Black

18 Izzy Chocolate Brown Suede Wedge Ankle Boot £70

19 Livvy Ankle Boots Livvy Goat Skin Ankle Boot. Elegant goat skin ankle boot that goes with any colour or outfit – but particularly good with jeans £120

20 Monroe Ankle Boot Beautiful and elegant black kid suede ankle boot with shearling inside and a bit of sparkle £140

Ellie Boots

Super snug booties with lovely furry insides £70

- 21 Camel
- 22 Brown

23 Sophie Boots Black Super snug booties with lovely furry insides £70



There are more accessories available online at www.wizardjeans.com



12



13



14



15



16



17



18



19



20



21



22



23

To order visit wizardjeans.com or call **07768 816420**

55

The *Men's* Room

Elegant
men's black jeans.

Brad Black £125 - £99

Mid-rise, straight cut with 34" inside leg.
Perfect for any occasion.

These Wizard jeans have a mid rise and come in a very fashionable jet black and benefit from a very flattering cut and the Wizard© bonding technology, which together certainly makes any man look as if he has lost a few pounds and extremely stylish.

No more baggy bottoms - these jeans just show off a man's body at its best, whilst still being extremely comfortable! The jeans carry a distinctive yet discreet double 'W' in a tonal colour on both back pockets and have a zip fly.

The denim is 2% elastane and 98% cotton.

UK waist sizes: 30" to 46"

Inside leg is 34 inches.



★ **ELITE** | DIRECT TO YOU
WIZARD JEANS | ENJOY THE SAVINGS
by Sally Allen★

Stylish men's jeans.

Brad Blue £125 - £99

Stylish men's jeans in elegant indigo blue. For men who want to look great with little effort. Mid-rise, straight cut, with unique Wizard© body shaping technology, zip fly and 34" inside leg. Available in UK sizes 30" to 42"

Styled with

Blue & White Stripe Lancing Shirt

A 100% cotton striped shirt with button down collar. Fashionable and perfect for casual and smart occasions.

Available in UK Sizes S, M, L, XL and XXL.



To order visit wizardjeans.com or call **07768 816420**

57

Super cool.

Redford £125 - £99

Men's mid-rise, straight cut jeans in stonewash blue
- The ultimate chic look with a white tee or shirt and jacket.

These Wizard jeans have a mid-rise and come in a very fashionable stonewash blue and benefit from a very flattering cut and 'pocket control', which certainly makes any man look as if he has lost a few pounds - and extremely stylish. No more baggy bottoms - These jeans just show off a man's body at it's best, whilst still being extremely comfortable!

The jeans carry a distinctive yet discreet double 'W' in dark blue on both back pockets and have a zip fly.

As seen on Anton du Beke and John Barrowman - two of our 'Wizard Jeans Rear of the Year' winners.

Inside leg is 34 inches.

The denim is 2% elastane and 98% cotton.

Available in UK waist sizes: 30" to 42".

Styled with

Padstow shirt in Rose £58

A stylish soft rose colour in 100% very high quality cotton with a button down collar. A colour and style that will go with most outfits.

Available in UK Sizes S, M, L, XL and XXL



★**ELITE**
WIZARD JEANS
by Sally Allen★

DIRECT TO YOU
ENJOY THE SAVINGS

Very stylish.

Harry £125 - £110

Stylish white jeans with unique Wizard© body shaping technology. A very chic well cut pair of jeans to show you off at your best. Fantastic paired with a T Shirt or shirt and jacket. 34" inside leg and available in UK Sizes 32" to 44".

Styled with

Padstow shirt in White **£58**

With button down collar in 100% very high quality cotton – a winner for any occasion. Available in UK Sizes S, M, L, XL and XXL



To order visit **wizardjeans.com** or call **07768 816420**

59

Men's *Shirts*

Padstow shirt £58

With button down collar in 100% very high quality cotton – these shirts are winners for any occasion.

Available in **White, Blue, Aqua, Lilac, Yellow** and **Rose** and in UK Sizes S, M, L, XL & XXL.

White

Blue

The
Men's
Room



Aqua



Lilac

Yellow

Rose



To order visit **wizardjeans.com** or call **07768 816420**

The
Men's
Room

I





2



3



4

1 Blue & White Stripe Lancing Shirt £58

100% cotton striped shirt with button down collar.
Fashionable and perfect for casual and smart occasions.
Available in UK Sizes S, M, L, XL and XXL

2 Life & Heritage Limited Edition Alfie shirt £95

available in sizes M/L.

3 Life & Heritage Limited Edition Ben shirt £95

available in sizes S/M.

4 Life & Heritage Limited Edition Albert shirt £95

available in sizes M/L.

Men's Shirts

To order visit wizardjeans.com or call **07768 816420**

63

the *Shape* of things to come...



1 *Skinny*

A slim style that skims knees and ankles without being as tight in the leg as a jeggings, the narrow shape of skinny jeans makes legs look long and lean. Great for lending your denim repertoire extra elegance.

Style **TIP:** Update your skinnies with boxfresh white trainers for a touch of sports-luxe style.

From Skinnies to Flares and everything in-between – there will be a style and shape to suit your figure. Our regular rise are cut a little wider at the top to help disguise ‘muffin tops’ and for extra security and confidence – the full rise straight or boot cut styles are an excellent option. Remember – your choice of shoes or boots can make a huge difference to your look.



2 *Straight Leg*

The straight-leg jean is back, teamed with everything from loafers to heels. This classic style is a flattering choice which balances the figure, creating an elongated silhouette – ideal if you're petite.

Style **TIP:** Heels! They make your legs look even longer.



3 *Flare*

Featuring a slim cut with a gentle flare, these jeans will not only flatter your figure but give the illusion of longer pins too. The gentle curved silhouette is a great foil for heels.

Style TIP: Create the high fashion look with high heels and a clean cut polo.



4 *Boot Cut*

With a slim-fit upper leg, which flares out from the knee, bootleg jeans are universally flattering. A contemporary take on a vintage style, the shape adds interest to a simple T-shirt or go retro with a floral blouse.

Style TIP: For easy, retro-inspired style wear bootleg jeans with high heel boots and a bomber jacket.

your guides to...

Measuring

Lay your best fitting jeans down on a flat surface and then measure the following:

THE RISE

The measurement from the top of the waistband down to the bottom of the crotch seam.

If you are unsure of where your new jean will sit on your waist measure from the crotch upwards to the top of the waistband. This measurement will give you the correct measurement of where the jeans you are looking at will sit on your body. Remember, you may want to make a note of this measurement.

THE INSEAM

The inseam is the measurement of the inside leg to take this measure from the crotch down the leg to the ankle.

THE WAIST

Take the measurement from the smallest part of your waist which is your natural waistline, above your navel and below your ribcage. Measure straight across. Note that your actual waist measurement will not equal jean waist size. For example, a person with a 26-inch waist typically wears jeans with a 28-inch waist.

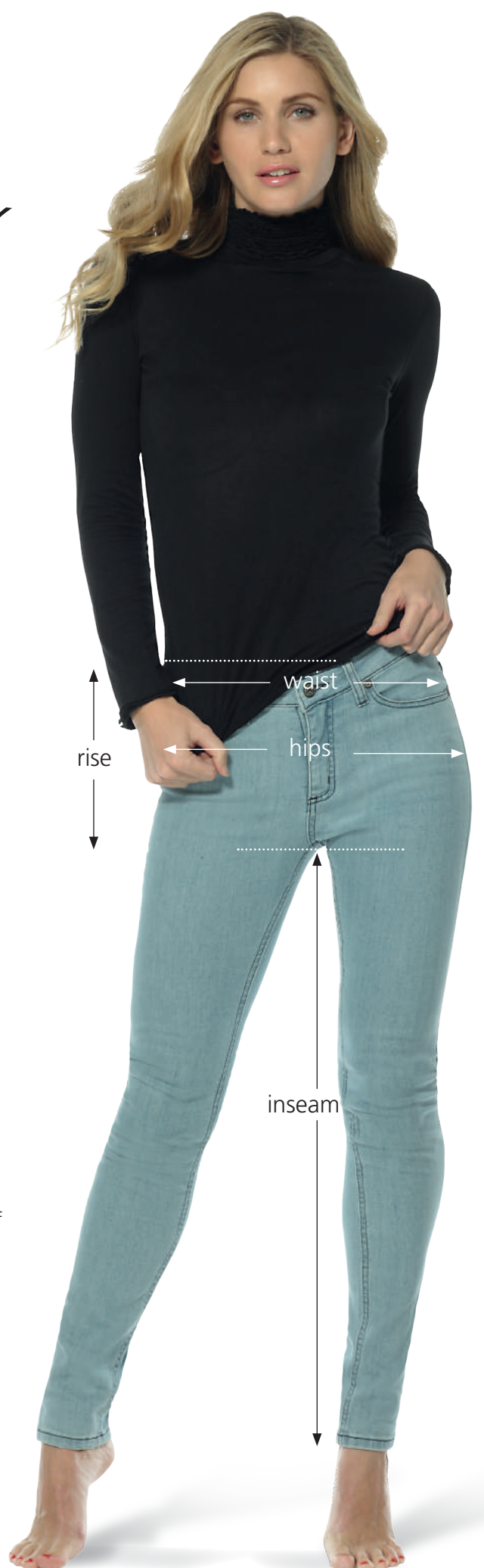
THE HIP

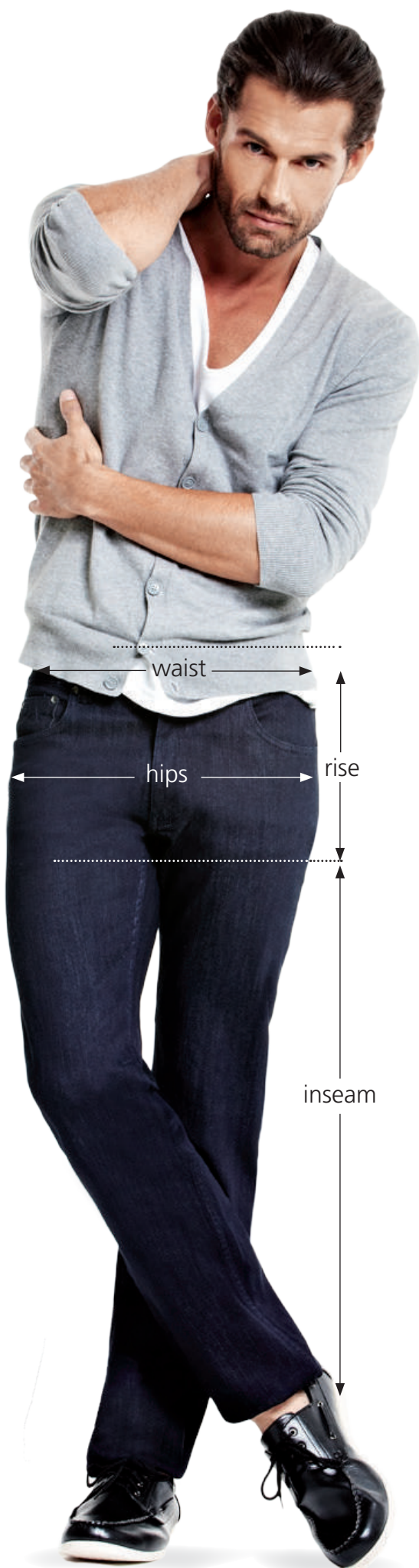
Stand with your feet together take the tape measure around your bottom and measure the fullest part of your hips at the top of your legs, approx 9 inches lower than your waistline.

THE LEG OPENING

This is the measurement that will tell you how wide the opening of the leg of your new jeans will be. Measure the circumference of the bottom of the hem.

Alteration
service
£10
a pair





Control

POCKET CONTROL

The Wizard Jean styles with 'pocket control' all have special pockets made from high quality, strong fabric which are then stitched tightly either side of the leg inside the jean to maximise support to pull in and lift up the stomach.

BONDING

All Wizard Jean styles with bonding benefit from special Wizard® body contouring technology. The 'Spanx' like fabric is bonded on to the denim and goes from the waist down to and including the very top of the thighs – which lifts the bottom, lifts and holds in the stomach and gives a very flattering contour to the hips. It works a bit like an old fashioned 'roll on girdle' – but you don't feel it because it is bonded on to the fabric and is extremely comfortable.

Rise

Both women and men have a "unique rise measurement". The reason it's unique is because it's personal to our body shape and size. This is why finding the perfect pair of jeans tends to be tricky, trying to find a unique pair of jeans to fit our unique body seems like a one in a million shot. You wouldn't go hiking without a map would you, with this in mind your "unique rise measurement" is your map or key to finding great fitting jeans.

FULL RISE STRAIGHT & BOOT CUT STYLES

Full Rise means that the jeans come up to and into the shape of the waist making the legs look elongated.

REGULAR RISE SKINNY CUT STYLES

Regular rise means the jeans come up to the navel and have been cut a little straighter at the top to help disguise muffin tops.

MEASURING YOUR UNIQUE RISE

We all have a unique rise measurement and the key to successful shopping for jeans is knowing this magic number. (You will need to be wearing jeans for this bit.)

a: Take a tape measure and measure the distance from the crotch seam of your jeans upwards to your belly button. Write down this number as this is the highest rise you can wear comfortably for your unique body shape.

b: Then measure from the crotch seam up to two fingers below your belly button. This will give you the measurement of your most comfortable rise you should wear for your body shape.

c: The last measurement is for the lowest rise you can wear, so measure from the crotch seam up to three fingers below your belly button. By doing this you will have a clear idea of how high and low the rise of a jean needs to be for you to wear comfortably.

N.B. Please note that all Wizard Jeans are cut and styled to give the best silhouette and that they will not lose their shape if they should need to be shortened.

your guide to *Sizing*

LADIES

BOOT CUT - BOOT CUT FLARE - FULL RISE

Bardot, Zara Jet Black, Zara Indigo Blue, Zara Midnight Blue.

Sizes	6	8	10	12	14	16	18	20
Waist	24.5	26	28	30	32	34	36	38
Hip	32.5	34	35.5	37	38.5	40	41.5	43
Front Rise	10	10.25	10.5	11	11.5	11.75	12.25	12.5
Back Rise	13.75	14.25	14.5	15	15.25	15.75	16	16.5
Bottom Hem	17.25	18	18.75	19.75	20.25	21.25	22	22.75
Inside Leg	32/33	32/33	32/33	32/33	32/33	32/33	32/33	32/33

The Bardot Flare style has got different waist, bottom hem and inside leg measurements. The rest of the measurements are as the other boot cuts (as above).

Sizes	6	8	10	12	14	16	18	20
Waist	25	26	28	30	32	34	36	38
Bottom Hem	24	24	24	24	25	25	26	26
Inside Leg	33	33	33	33	33	33	33	33

STRAIGHT LEG - FULL RISE

Sienna Midnight with Austrian Crystal, Sienna Jet Black, Sienna Dark Blue, Jude Stonewash Blue.

Sizes	6	8	10	12	14	16	18	20
Waist	24.5	26	28	30	32	34	36	38
Hip	32.5	34	35.5	37	38.5	40	41.5	43
Front Rise	10	10.25	10.5	11	11.5	11.75	12.25	12.5
Back Rise	13.75	14.25	14.5	15	15.25	15.75	16	16.5
Bottom Hem	13.5	14.25	15	15.75	16.5	17.25	18	18.25
Inside Leg	32	32	32	32	32	32	32	32

The following styles are as above but with different waist measurements.

Sienna Classic Indigo; 30", 32" & 34" leg.

Sizes	6	8	10	12	14	16	18	20
Waist	26	28	30	32	34	36	38	40

Garbo; 30", 32" & 34" leg. (*Please note - that due to the process to achieve the pinstripe in the fabric the jeans have come up a size smaller than normal so you will need to choose a size larger.)

Sizes	6	8	10	12	14	16	18	20
Waist	23	25	26	28	30	32	34	36

SKINNY PETITE

Gina Dolce Vita, Eden Roc, Lyndy Crop (25" inside leg), Marilyn, Gina Peachy, Glastonbury, Gigi.

Sizes	6	8	10	12	14	16	18
Waist	27	28.5	30	31.5	33	34.5	36
Hip	32	33.5	35	36.5	38	39.5	41
Front Rise	9.25	9.5	10	10.25	10.75	11	11.5
Back Rise	14.75	15.25	15.5	16	16.25	16.75	17
Bottom Hem	10	10.5	11	11.5	12	12.5	13
Inside Leg	27	27	27	27	27	27	27

SKINNY - NATURAL/REGULAR RISE

Glastonbury, Gina Chocolate, Black Domino, Gina Jet Black, Gina Diamante Jet Black, Gina Midnight Blue, Gina Indigo*, Gina Dolce Vita**, Eden Roc**, Marilyn**, Lauren, Lyndy Stripe, Pink Champagne, Bombay Blue, Malibu White, Lemon Fizz, Gina Stonewash Blue, Gigi.

Sizes	6	8	10	12	14	16	18
Waist	27	28.5	30	31.5	33	34.5	36
Hip	32	33.5	35	36.5	38.5	39.5	41
Front Rise	9.25	9.5	10	10.25	10.75	11	11.5
Back Rise	14.75	15.25	15.5	16	16.25	16.75	17
Bottom Hem	10	10.5	11	11.5	12	12.5	13
Inside Leg	32	32	32	32	32	32	32

* Gina Indigo also available in a 34" leg

** Gina Dolce Vita, Eden Roc, Marilyn also available in a 27" leg

Lyndy Crop same as Lyndy Stripe (above), but with 25" inside leg.

Lauren also the same as Lyndy Stripe (above), but with 30.5" inside leg.

Sizes	6	8	10	12	14	16	18
Inside Leg	25	25	25	25	25	25	25

MEN

STRAIGHT LEG

Brad Blue, Brad Jet Black, Redford, Harry.

Sizes	30	32	34	36	38	40	42	44
Waist	29.5	31	32.5	34	36	37.5	39	40.5
Hip	37	38.5	40	41.75	43.75	45	46.5	48
Inside Leg	34	34	34	34	34	34	34	34
Front Rise	9.5	9.75	10	10.25	10.5	10.5	10.75	11
Back Rise	14.75	15	15.25	15.5	15.75	16	16.25	16.5
Bottom Hem	15.75	16	16.5	17	17.25	17.75	18	18.25

Use the Measuring Guide to calculate your sizes to be sure of the best possible fit. All sizes are in inches.

Leg Shortening

We can shorten your jeans for you when you buy your jeans but need a shorter leg length. We can have them shortened for you for a nominal charge of £10. You give us the leg length and we will do the rest.

If you do have your jeans shortened they will not be eligible for a return or an exchange and this offer only applies to new purchases before they are sent out.



How to Order

www.wizardjeans.com

Telephone 07768 816420

Any cheques sent with orders should be made payable to **WIZARD JEANS** and sent to:

Sally Allen Fashion
Villa Stuart
Torbay Road,
Torquay
TQ2 6QH
Devon
United Kingdom

RETURNS & EXCHANGES

Once you receive your order, should you wish to make an exchange or receive a refund, you will have to return it to us within 7 days of delivery (see our returns section for further details on our returns policy published in full on our website).

Please fill out the returns form which comes with your delivery and send it back with your requirements clearly marked, explaining if you want a refund or an exchange - and if so exactly what you would like.

Postal charges

Royal Mail 1st Class: **£4.95**
Delivery Time 3 – 4 days

Parcelforce 24 hour Courier
Next day Mon to Fri: **£7.95**

Parcelforce before 10.00 am following day
or Saturday morning delivery: **£10.95**

EU
up 1 kg: Flat rate **£15**

Parcelforce (Euro Priority)
Delivery Time 4-6 days
Up to 30kg: **£43.75**

Rest of the world
up to 1kg: Flat rate £17.95
Over 1kg: Flat rate £26

Online *Boutique*

Visit our online Boutique at

www.wizardjeans.com

for our exclusive range of Tops, Outerwear, Dresses
and Cruisewear.



To order visit wizardjeans.com or call **07768 816420**

71



★
ELITE
WIZARD JEANS
& FASHION *by Sally Allen★*

FOR FURTHER SALES INFORMATION
CONTACT SALLY ALLEN-GERARD

07768 816420
sally@wizardjeans.com